

PRODUCT INFORMATION PACKET

Model No: 449THFS9088
Catalog No: W622
200,1200,TEFC,449T,3/60/460
Severe Duty



Regal and Marathon are trademarks of Regal Beloit Corporation or one of its affiliated companies.
©2018 Regal Beloit Corporation, All Rights Reserved. MC017097E



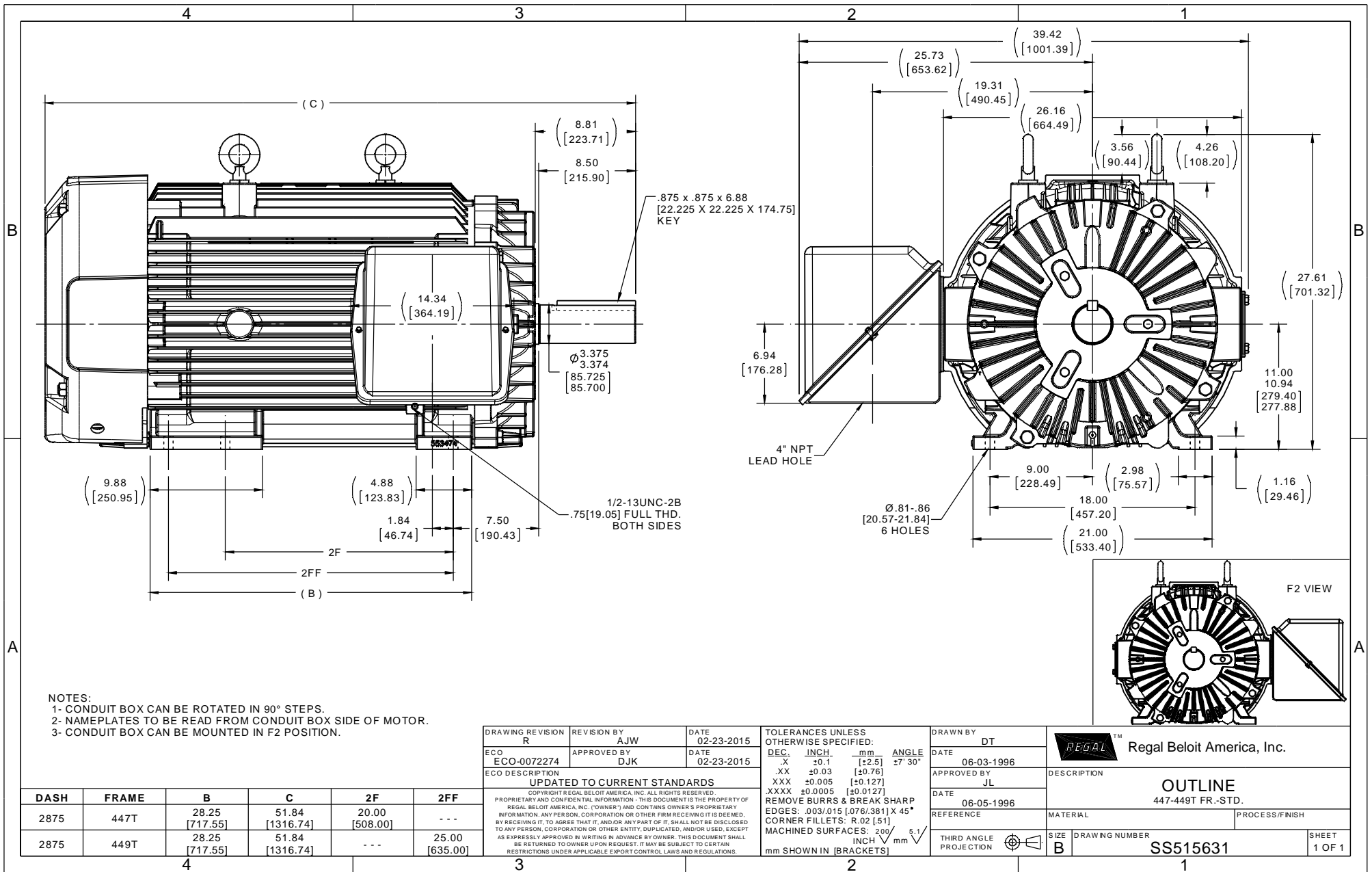
Nameplate Specifications

| | | | |
|----------------------------|------------------------------------|------------------------|-------------------|
| Output HP | 200 Hp | Output KW | 149.0 kW |
| Frequency | 60 Hz | Voltage | 460 V |
| Current | 240.0 A | Speed | 1190 rpm |
| Service Factor | 1.15 | Phase | 3 |
| Efficiency | 95.8 % | Duty | Continuous |
| Insulation Class | F | Design Code | B |
| KVA Code | G | Frame | 447/449T |
| Enclosure | Totally Enclosed Fan Cooled | Overload Protector | No |
| Ambient Temperature | 40 °C | Drive End Bearing Size | NU319 |
| Opp Drive End Bearing Size | 6318 | UL | Recognized |
| CSA | Y | CE | Y |
| IP Code | 56 | | |

Technical Specifications

| | | | |
|-----------------------|-------------------------------------|-----------------------|-------------------------|
| Electrical Type | Squirrel Cage Inverter Rated | Starting Method | Line Or Inverter |
| Poles | 6 | Rotation | Reversible |
| Mounting | Rigid Base | Motor Orientation | Horizontal |
| Drive End Bearing | Roller | Opp Drive End Bearing | Ball |
| Frame Material | Cast Iron | Shaft Type | T |
| Overall Length | 51.84 in | Frame Length | 28.75 in |
| Shaft Diameter | 3.375 in | Shaft Extension | 8.81 in |
| Assembly/Box Mounting | F1/F2 Capable | | |
| Outline Drawing | B-SS515631-2875 | Connection Diagram | A-EE7300 |

This is an uncontrolled document once printed or downloaded and is subject to change without notice. Date Created: 10/08/2018



NOTES:
 1- CONDUIT BOX CAN BE ROTATED IN 90° STEPS.
 2- NAMEPLATES TO BE READ FROM CONDUIT BOX SIDE OF MOTOR.
 3- CONDUIT BOX CAN BE MOUNTED IN F2 POSITION.

| | | |
|---|--------------------|--------------------|
| DRAWING REVISION R | REVISION BY AJW | DATE 02-23-2015 |
| ECO ECO-0072274 | APPROVED BY DJK | DATE 02-23-2015 |
| ECO DESCRIPTION UPDATED TO CURRENT STANDARDS COPYRIGHT REGAL BELOIT AMERICA, INC. ALL RIGHTS RESERVED. PROPRIETARY AND CONFIDENTIAL INFORMATION - THIS DOCUMENT IS THE PROPERTY OF REGAL BELOIT AMERICA, INC. (OWNER) AND CONTAINS OWNER'S PROPRIETARY INFORMATION. ANY PERSON, CORPORATION OR OTHER FIRM RECEIVING IT IS DEEMED, BY RECEIVING IT, TO AGREE THAT IT, AND/OR ANY PART OF IT, SHALL NOT BE DISCLOSED TO ANY PERSON, CORPORATION OR OTHER ENTITY, DUPLICATED, AND/OR USED, EXCEPT AS EXPRESSLY APPROVED IN WRITING IN ADVANCE BY OWNER. THIS DOCUMENT SHALL BE RETURNED TO OWNER UPON REQUEST. IT MAY BE SUBJECT TO CERTAIN RESTRICTIONS UNDER APPLICABLE EXPORT CONTROL LAWS AND REGULATIONS. | | |

| | | | |
|--|---------|-----------|---------|
| TOLERANCES UNLESS OTHERWISE SPECIFIED: | | | |
| DEC. | INCH. | mm | ANGLE |
| .X | ±0.1 | [±2.5] | 27° 30' |
| .XX | ±0.03 | [±0.76] | |
| .XXX | ±0.005 | [±0.127] | |
| .XXXX | ±0.0005 | [±0.0127] | |
| REMOVE BURRS & BREAK SHARP EDGES: .003/.015 [0.076/.381] X 45° | | | |
| CORNER FILLETS: R.02 [.51] | | | |
| MACHINED SURFACES: 200 / INCH 5.1 / mm | | | |
| mm SHOWN IN [BRACKETS] | | | |

| |
|------------------------|
| DRAWN BY DT |
| DATE 06-03-1996 |
| APPROVED BY JL |
| DATE 06-05-1996 |
| REFERENCE |
| THIRD ANGLE PROJECTION |

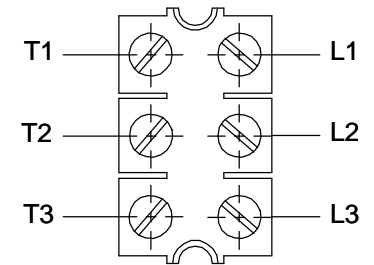
| | |
|--|----------------------------|
| Regal Beloit America, Inc. | |
| DESCRIPTION OUTLINE 447-449T FR.-STD. | |
| MATERIAL | PROCESS/FINISH |
| SIZE B | DRAWING NUMBER SS515631 |
| | SHEET 1 OF 1 |

| DASH | FRAME | B | C | 2F | 2FF |
|------|-------|-------------------|--------------------|-------------------|-------------------|
| 2875 | 447T | 28.25 [717.55] | 51.84 [1316.74] | 20.00 [508.00] | --- |
| 2875 | 449T | 28.25 [717.55] | 51.84 [1316.74] | --- | 25.00 [635.00] |

**THREE PHASE - SINGLE VOLTAGE
MOTOR - CONDUIT BOX @ 'A'**

**TO REVERSE ROTATION:
INTERCHANGE ANY TWO
LINE LEAD CONNECTIONS.**

TERMINAL BLOCK WHEN SPECIFIED



VIEW OF TERMINAL END

**IF MOTOR HAS
6 LEADS**



A-9806 DECAL

**OPTIONAL CORD
CONNECTION**

- L1 WHITE
- L2 RED
- L3 BLACK

| | | |
|---|---------------------------|---------------------------|
| DRAWING REVISION AB | REVISION BY JJB | DATE 06-27-2017 |
| ECO ECO-0125361 | APPROVED BY TB | DATE 06-27-2017 |
| ECO DESCRIPTION UPDATED TO CURRENT STANDARDS | | |
| <small>COPYRIGHT REGAL BELOIT AMERICA, INC. ALL RIGHTS RESERVED. PROPRIETARY AND CONFIDENTIAL INFORMATION - THIS DOCUMENT IS THE PROPERTY OF REGAL BELOIT AMERICA, INC. ("OWNER") AND CONTAINS OWNER'S PROPRIETARY INFORMATION. ANY PERSON, CORPORATION OR OTHER FIRM RECEIVING IT IS DEEMED, BY RECEIVING IT, TO AGREE THAT IT, AND/OR ANY PART OF IT, SHALL NOT BE DISCLOSED TO ANY PERSON, CORPORATION OR OTHER ENTITY, DUPLICATED, AND/OR USED, EXCEPT AS EXPRESSLY APPROVED IN WRITING IN ADVANCE BY OWNER. THIS DOCUMENT SHALL BE RETURNED TO OWNER UPON REQUEST. IT MAY BE SUBJECT TO CERTAIN RESTRICTIONS UNDER APPLICABLE EXPORT CONTROL LAWS AND REGULATIONS.</small> | | |



| |
|---------------------------|
| DRAWN BY DA |
| DATE 03-26-1993 |
| APPROVED BY TB |
| DATE 03-26-1993 |
| REFERENCE |
| THIRD ANGLE PROJECTION |

| | | |
|-----------------------------------|---------------------------------|--|
| Regal Beloit America, Inc. | | |
| | | DESCRIPTION CONNECTION DIAGRAM EXTERNAL - SINGLE VOLTAGE - 3Ø MOTOR |
| MATERIAL | PROCESS/FINISH | |
| SIZE A | DRAWING NUMBER EE7300 | SHEET 1 OF 1 |

Data Sheet

Date: 29-06-2017
 Customer: _____
 Attention: _____
 Submitted by: FAREEDA DUDEKULA



449THFS9088

Submittal

Data @ 460 V

Motor Load Data

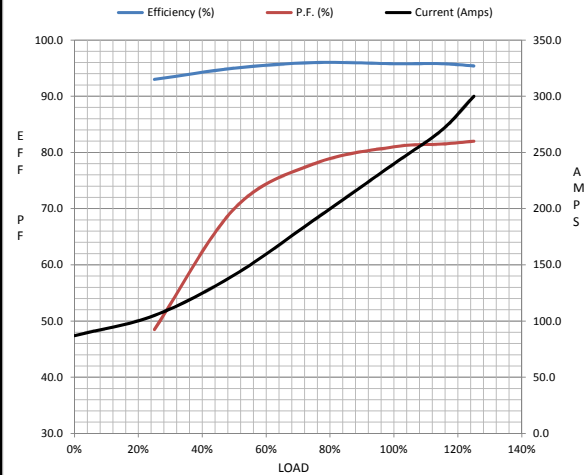
| Load | 0% | 25% | 50% | 75% | 100% | 115% | 125% | LR |
|----------------|------|------|------|------|------|-------|-------|-------|
| Current (Amps) | 87.0 | 105 | 141 | 190 | 240 | 270 | 300 | 1,450 |
| Torque (ft-lb) | 0.00 | 219 | 440 | 661 | 883 | 995 | 1,107 | 1,325 |
| RPM | 1200 | 1196 | 1194 | 1192 | 1190 | 1,188 | 1186 | 0 |
| Efficiency (%) | | 93.0 | 95.0 | 96.0 | 95.8 | 95.8 | 95.4 | |
| P.F. (%) | 4.0 | 48.5 | 70.0 | 78.0 | 81.0 | 81.5 | 82.0 | 25.5 |

Motor Speed Data

| | LR | Pull-Up | BD | Rated | Idle |
|----------------|-------|---------|-------|-------|------|
| Speed (RPM) | 0 | 600 | 1125 | 1190 | 1200 |
| Current (Amps) | 1,450 | 1,350 | 825 | 240 | 87.0 |
| Torque (ft-lb) | 1,325 | 1,300 | 2,100 | 883 | 0.00 |

Information Block

| | | | | |
|-----------------------------|------------------------|--------|--------|--------|
| HP | 200.0 | | | |
| Sync. RPM | 1200 | | | |
| Frame | 449 | | | |
| Enclosure | TEFC | | | |
| Construction | TFN | | | |
| Voltage | 460 V | | | |
| Frequency | 60 Hz | | | |
| Design | B | | | |
| LR Code letter | G | | | |
| Service Factor | 1.15 | | | |
| Temp Rise @ FL | 75 ° C | | | |
| Duty | CONT | | | |
| Ambient | 40 ° C | | | |
| Elevation | 1,000 feet | | | |
| Rotor/Shaft wk ² | 115 Lb-Ft ² | | | |
| Ref Wdg | T449627 NONE | | | |
| Sound Pressure @ 1M | 72 dBA | | | |
| VFD Rating | CONSTANT 10:1 | | | |
| Outline Dwg | B-SS515631-2875 | | | |
| Conn. Diag | A-EE7300 | | | |
| Additional Specifications: | | | | |
| 0 | | | | |
| 365THFS8036 | | | | |
| EQUIV CKT (OHMS / PHASE) | | | | |
| R1 | R2 | X1 | X2 | Xm |
| 0.0100 | 0.0100 | 0.1250 | 0.1600 | 2.7410 |



Speed -Torque Curve

